



POWDERJET SERIES



STANDARD ACCESSORIES

POWDERJET-85 is a gun that deposits various metals, ceramics, cermets etc, which are available in powder form.

Gas control unit : It consists of two-stage precision regulators for oxygen & acetylene.

Gas flow-meter : For regulating flow of gases & preventing backfire.

Vibrator (optional) : It helps free flow of fine powder.

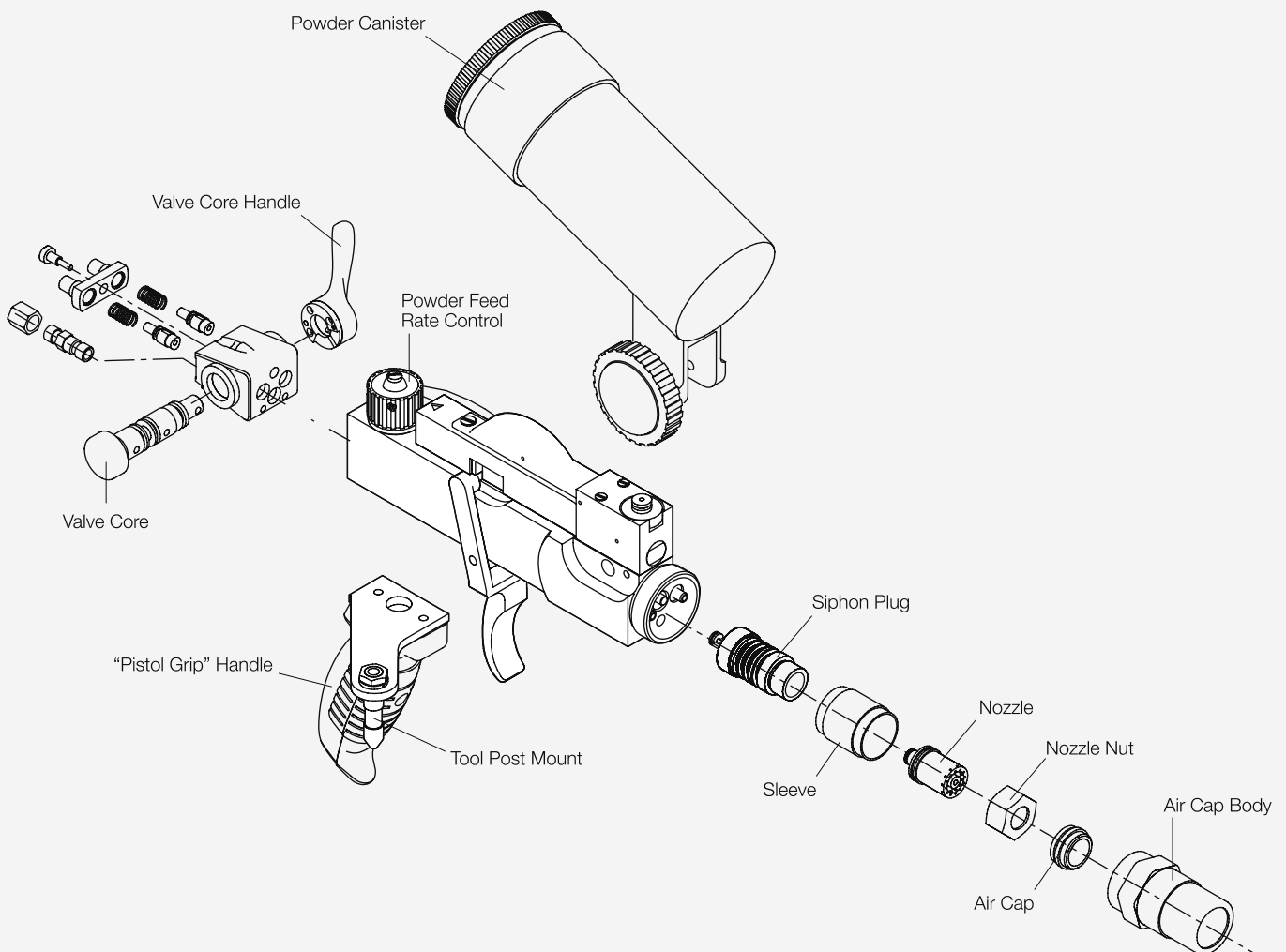
SPECIAL FEATURES

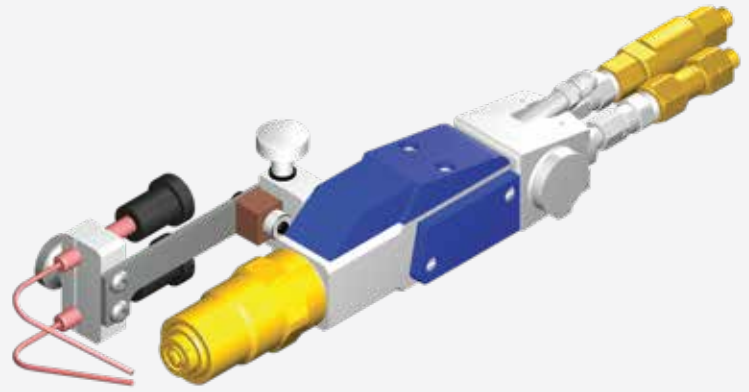
Powder Hopper: It is removable without need of any tool.

Flow Control Valve: It has a numbered index dial for precise setting of feed rate of powder.

Start Stop Trigger: For easy start-stop of powder flow.

Cylinder Valve: Single lever valve-easy lightening of gun, No needle valve required for gas adjustment.





STANDARD ACCESSORIES

POWDERJET-86 gun is extremely versatile and offers premium coating for wear resistance, corrosion protection, thermal and electrical insulation, etc.

- ▲ Powderjet feeder
- ▲ PF-SB-3355 gas flow-meter
- ▲ Gas control unit
- ▲ Air control unit
- ▲ Cooling wand (air-jet assembly)
- ▲ Interconnecting hose unit (5 m)

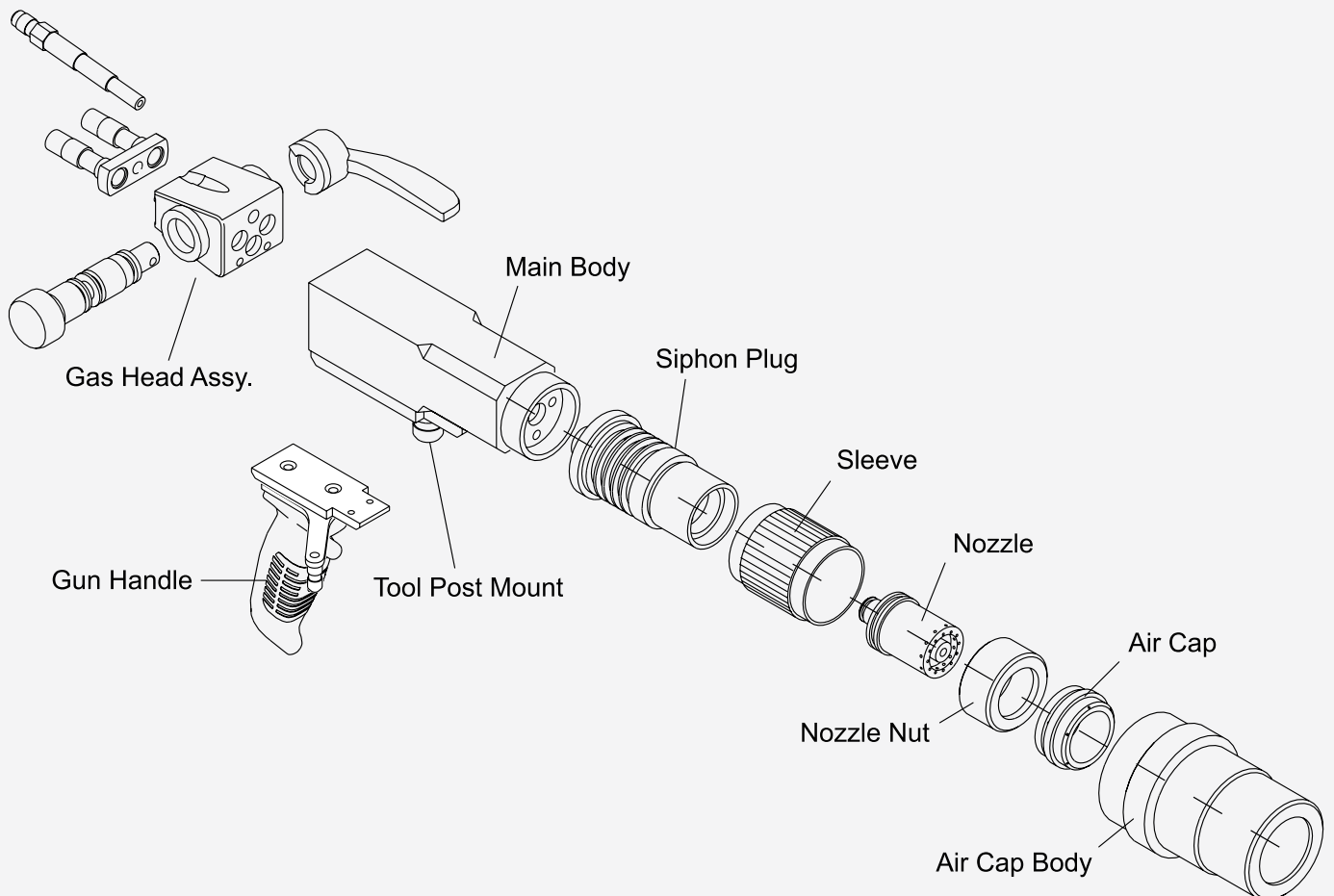
SPECIAL FEATURES

The system can be made fully automatic or programmable.

Equipped with Reverse Flow Check valve to ensure safety.

Successfully used with varying spray rates, as high as 25 kg/hr.

Optionally Oxy-LPG/CNG gases can be used for low melting powder like plastic powder to save fuel cost.





MEC MASS FLOW CONTROLLED POWDER FLAME SPRAY SYSTEM ML-2700

SPECIAL FEATURES

- Closed loop control system for all process gases equipped with mass flow controllers.
- The 9" wide color touch screen allows the graphical display and the programming of all process relevant parameters.
- This system is equipped with remote diagnostic feature.
- Integration of auxiliary components is possible.




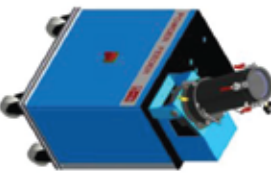
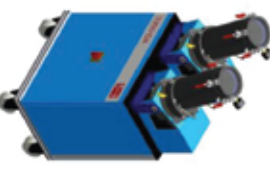

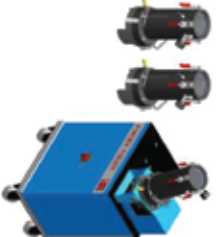

EXTEND YOUR COATING REACH



Standard lengths: 1 foot (300 mm), 2 feet (600 mm), 3 feet (900 mm)

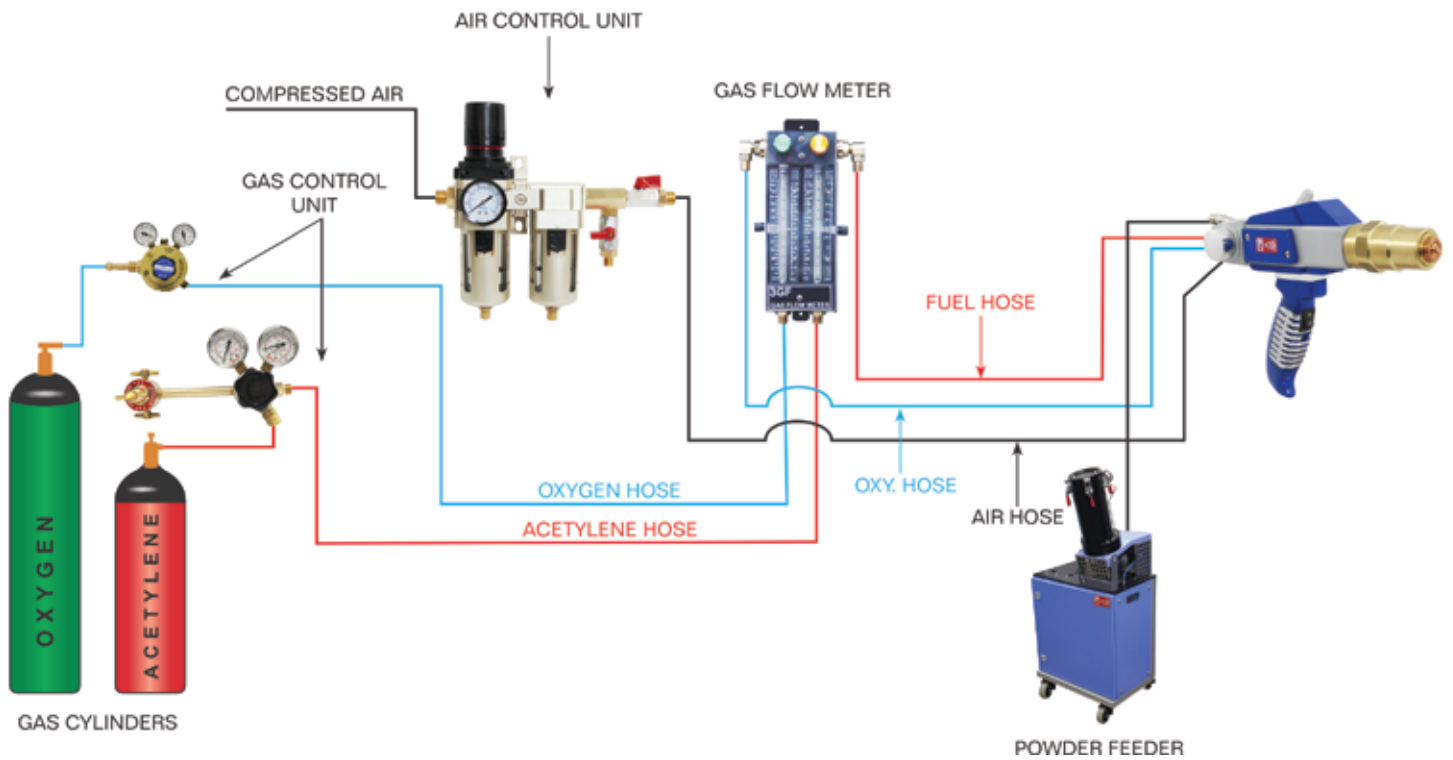
Perforated Disk Type [Volumetric Feed]

Thermal Spray and Laser Powder Feeders

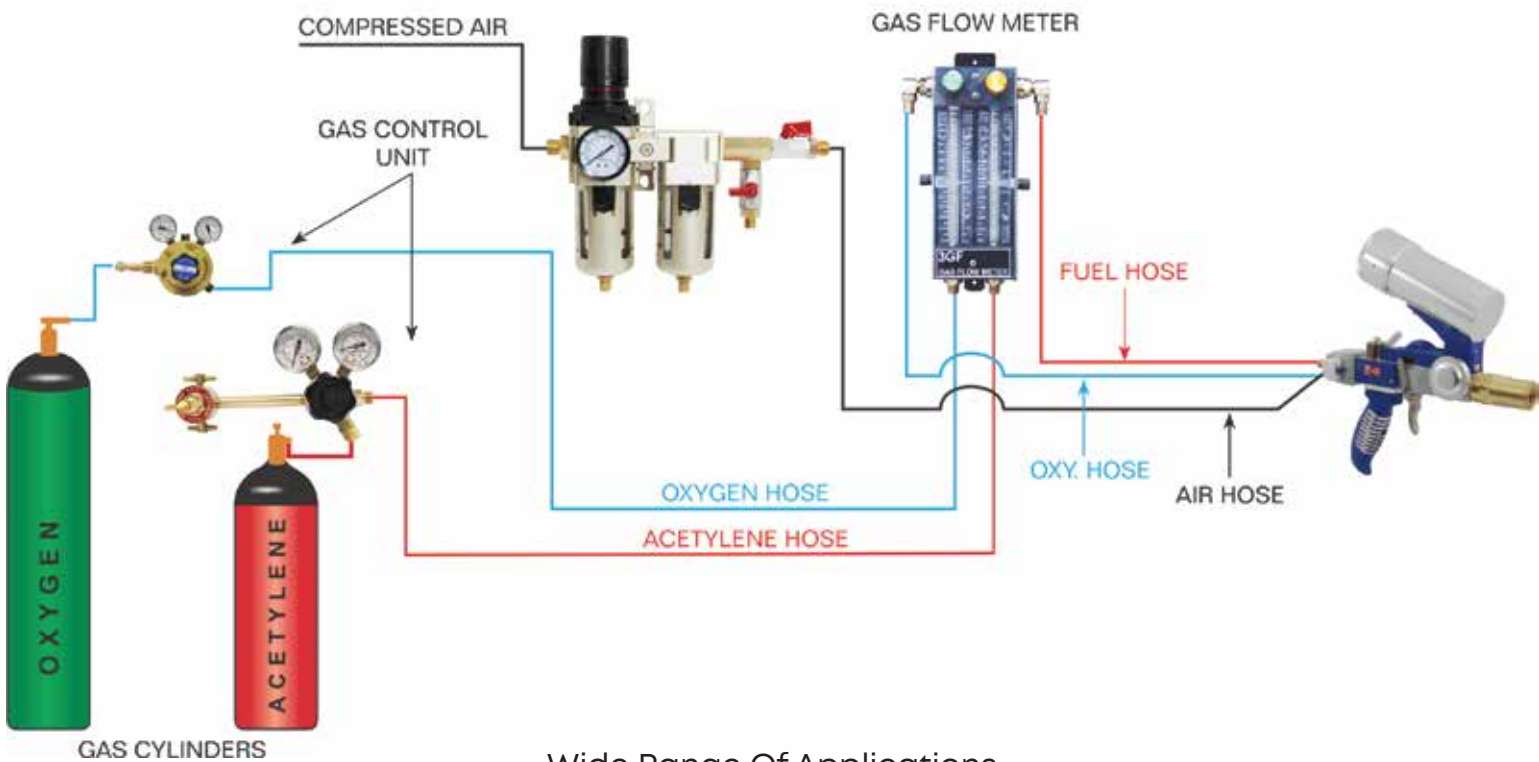
BASE TYPE	BASE COMMON FEATURES	APPLICABLE CANISTER TYPE	APPEARANCE	CANISTER FEATURES
<p>PF-SB [stand-alone type]</p> <p>PF-SB-A [with automation panels - Not high back pressure plasma/MJP-5000/6P type systems]</p> <p>PF-SB-HP [For panels with high back pressure DU/JetKote/Hipollet type systems. It has optional pressure relief solenoid valve]</p>	<ul style="list-style-type: none"> • Small and light portable base. • Heating Jacket optional • Supply pressure - 2.5 bar OR 9 bar. • Calibrated Flow tube scale in SCFH and SLPm. • Manual control of carrier. • Can be integrated with other make panels. 	<p>2855 OR 3355 OR 5000* OR 7800*</p> <p>*Not to be used with 'HP' Base.</p>		<p>3355: Improved design for more accurate feed rate and pads eliminated; Capacity - 3.3 Liters, Max. W.P. - 10 bar</p> <p>2855: Smaller version of 3355 with higher W.P.; Capacity - 2.8 Liters, Max. W.P. - 12 bar</p>
<p>PF-MFS [with automatic panels - Not high back pressure plasma/MJP-5000/6P type systems]</p> <p>PF-MFS-HP [For panels with high back pressure DU/JetKote/Hipollet type systems. It has optional pressure relief solenoid valve]</p>	<ul style="list-style-type: none"> • Fitted with single canister. • Mass flow controlled. • Trolley mounted with castors. • Integrated with MEC controllers. • Optionally available for stand alone working. • Heating Jacket optional. 	<p>3355 OR 5000* OR 7800*</p> <p>*Not to be used with 'HP' Base.</p>		<p>5000: Improved design for more accurate feed rate and pads eliminated; Capacity - 5.0 Liters, Max. W.P. - 2.5 bar</p> <p>7800: Improved design for more accurate feed rate and pads eliminated; Capacity - 7.8 Liters, Max. W.P. - 2.5 bar</p>
<p>PF-MFD [with automatic panels - Not high back pressure Plasma/MJP-5000/6P type systems]</p> <p>PF-MFD-HP [For panels with high back pressure DU/JetKote/Hipollet type systems. It has optional pressure relief solenoid valve]</p>	<ul style="list-style-type: none"> • Fitted with Double canisters and having two separate outlets. • Suitable for Graded Coatings. • Mass flow controlled. • Trolley mounted with castors. • Integrated with MEC controllers. • Optionally available for stand-alone working. • Heating Jacket optional. 	<p>3355 OR 5000* OR 7800*</p> <p>*Not to be used with 'HP' Base.</p>		<p>7800: Improved design for more accurate feed rate and pads eliminated; Capacity - 7.8 Liters, Max. W.P. - 2.5 bar</p>
<p>QUICK CHANGE CANISTER DESIGN</p> <p>PF-QR-A [Flow tube controlled]</p> <p>PF-QR-MF [Mass flow controlled]</p>	<ul style="list-style-type: none"> • Quick release of canisters by unlocking latches. • Suitable for high purity coatings where changing of powder type needs to be avoided. • Only for 6P, Plasma, MJP-5000/6000 and systems with NOT high back pressure. • Heating Jacket optional. 	<p>2900</p> <p>Light Weight Exchangeable Canisters</p> 		<p>2900: Smaller canister version of 3355 with less weight; Capacity - 2.8 Liters, Max. W.P. - 2.5 bar</p> 

Standard System Layout

Powder Jet - 86 Spray Gun Installation



Powder Jet - 85 Spray Gun Installation



Wide Range Of Applications



Pump plungers, dental crucibles, graphite crucibles, heat treating equipment, pump sleeves, face plates, metal pouring troughs, seal rings, cutting lances, flame brooms, lapping plates, permanent mould facings, galvanizing kettles, plug gauges, textile cones, thread guides, heating tracks, pump seals, wear rings, crusher rolls, and glass moulds.



CERTIFICATION
 ISO 9001:2015
 ISO 17025:2017
 AS 9100D, CE

www.mecpl.com

Email: marketing@mecpl.com / sales@mecpl.com / biz@mecpl.com

Ph. : +91-291-2747601 Fax : 2746359